

Sections are colour coded for ease of reference:

Proactive

Reactive

1

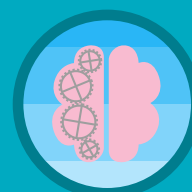
Know and understand your pupils and their influences



- Pupil behaviour has multiple influences, some of which teachers can manage directly
- Understanding a pupil's context will inform effective responses to misbehaviour
- Every pupil should have a supportive relationship with a member of school staff

2

Teach learning behaviours alongside managing misbehaviour



- Teaching learning behaviours will reduce the need to manage misbehaviour
- Teachers can provide the conditions for learning behaviours to develop by ensuring pupils can access the curriculum, engage with lesson content and participate in their learning
- Teachers should encourage pupils to be self-reflective of their own behaviours

3

Use classroom management strategies to support good classroom behaviour



- Effective classroom management can reduce challenging behaviour, pupil disengagement, bullying and aggression
- Improving classroom management usually involves intensive training with teachers reflecting on their classroom management, trying a new approach and reviewing their progress over time
- Reward systems can be effective when part of a broader classroom management strategy

4

Use simple approaches as part of your regular routine



- Some strategies that don't require complex pedagogical changes have been shown to be promising
- Breakfast clubs, use of specific behaviour-related praise and working with parents can all support good behaviour
- School leaders should ensure the school behaviour policy is clear and consistently applied

5

Use targeted approaches to meet the needs of individuals in your school

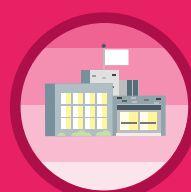


- Universal behaviour systems are unlikely to meet the needs of all your students
- For pupils with more challenging behaviour, the approach should be adapted to individual needs
- Teachers should be trained in specific strategies if supporting pupils with high behaviour needs

Implementation

6

Consistency is key



- Consistency and coherence at a whole-school level are paramount
- Whole-school changes usually take longer to embed than individually tailored or single-classroom approaches
- However, behaviour programmes are more likely to have an impact on attainment outcomes if implemented at a whole-school level

Report Published

7 June 2019

eef.li/behaviour